



PHASE 2 WWTF -AND- TRANSMISSION SYSTEM FACILITIES PLAN PRESENTATION

FOR

Town of Lake Hamilton

January 9, 2024



PROJECT BACKGROUND

Project Scope:

Phase 2 WWTF: Redundancy and other improvements eliminated from Phase 1 Project;

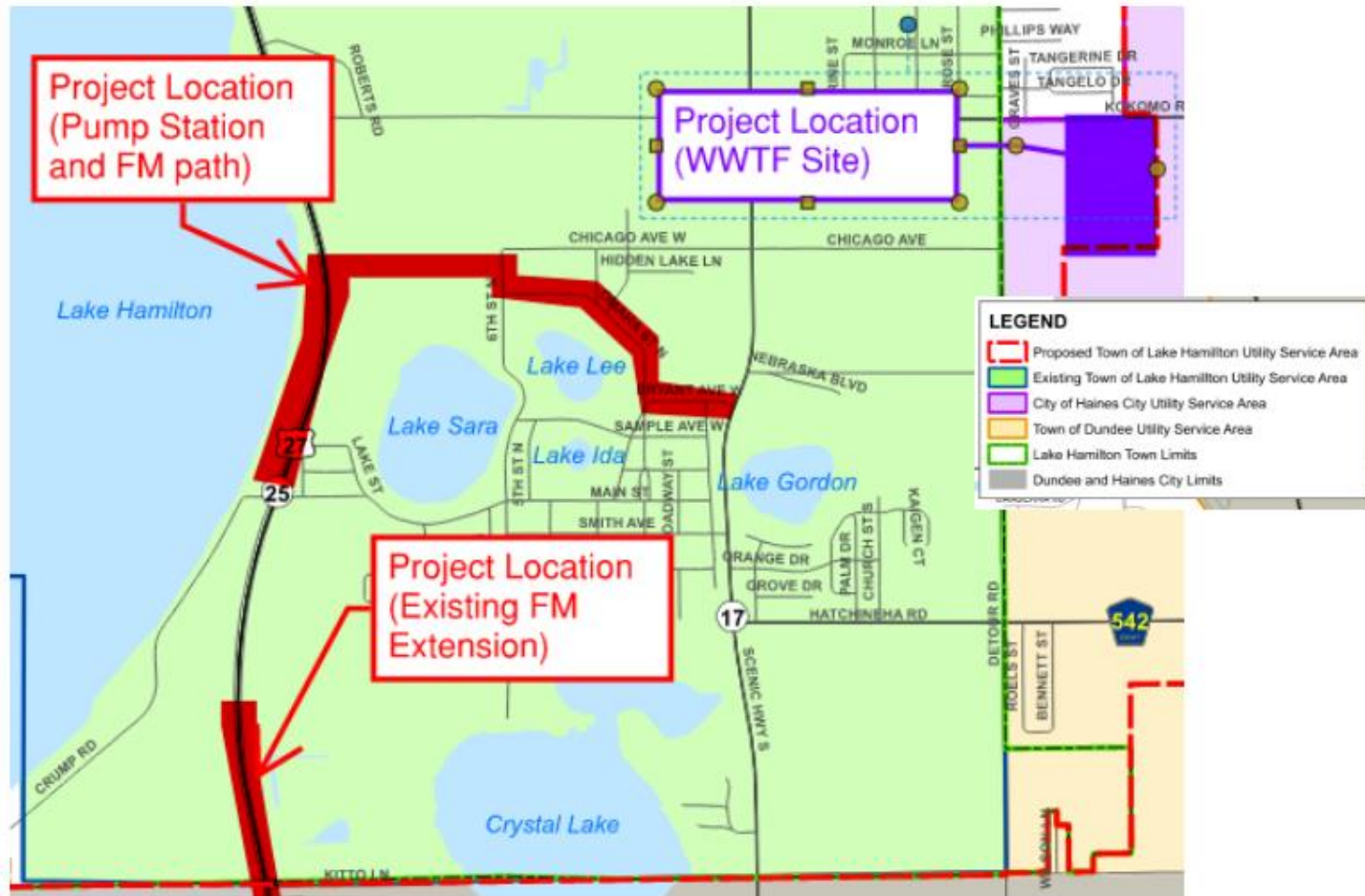
Transmission System: Pump station/force main improvements to direct wastewater from US 27 corridor to WWTF

Proposed Funding: FDEP State Revolving Fund (SRF) - \$9,057,633
(grant/loan)

Facilities Plan: December 23, 2023

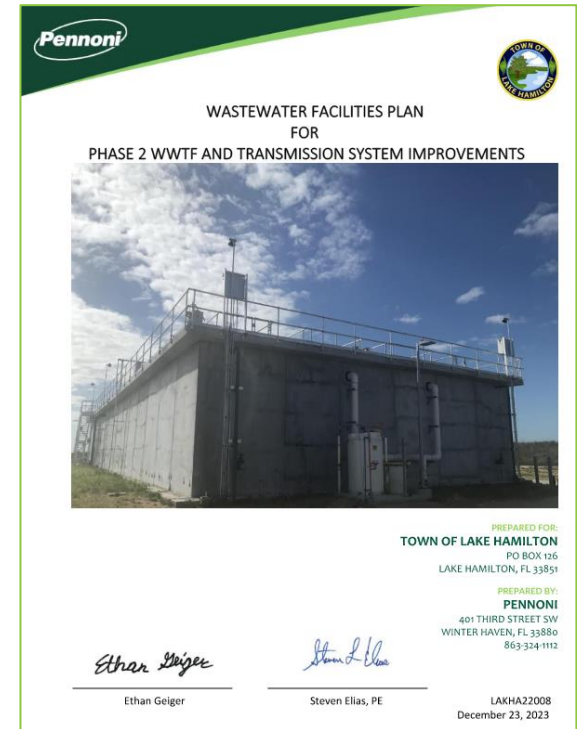


PROJECT AREA



FACILITIES PLAN OVERVIEW

- ◆ Requirement to obtain FDEP SRF funding
- ◆ Establish need for project
- ◆ Alternatives analysis
- ◆ Description of selected alternative
- ◆ Environmental review
- ◆ Capital Financing Plan
- ◆ Public Hearing for adoption by Town Council



ALTERNATIVES ANALYSIS



- ◆ Alternative 1: No Action
- ◆ Alternative 2: Phase 2 WWTF Resiliency Improvements (0.5 MGD) and Pump Station & Force Main to Town WWTF
- ◆ Alternative 3: Phase 2 WWTF Resiliency and Reuse Improvements (0.5 MGD) and Pump Station & Force Main to Town WWTF

COST ANALYSIS

Opinion of Probable Construction Cost (Present Worth):

- ◆ **Alternative 2:** Phase 2 WWTF resiliency improvements (0.5 MGD) and pump station & force main to Town WWTF:
 - ❖ Capital Cost: \$9.058 million
 - ❖ Present Worth Cost (20 year): \$8.633 million
- ◆ **Alternative 3:** Phase 2 WWTF resiliency and reuse improvements (0.5 MGD) and pump station & force main to Town WWTF
 - ❖ Capital Cost: \$16.225 million
 - ❖ Present Worth Cost (20 year): \$13.863 million

SELECTED ALTERNATIVE

Phase 2 WWTF (0.5 MGD) Resiliency Improvements:

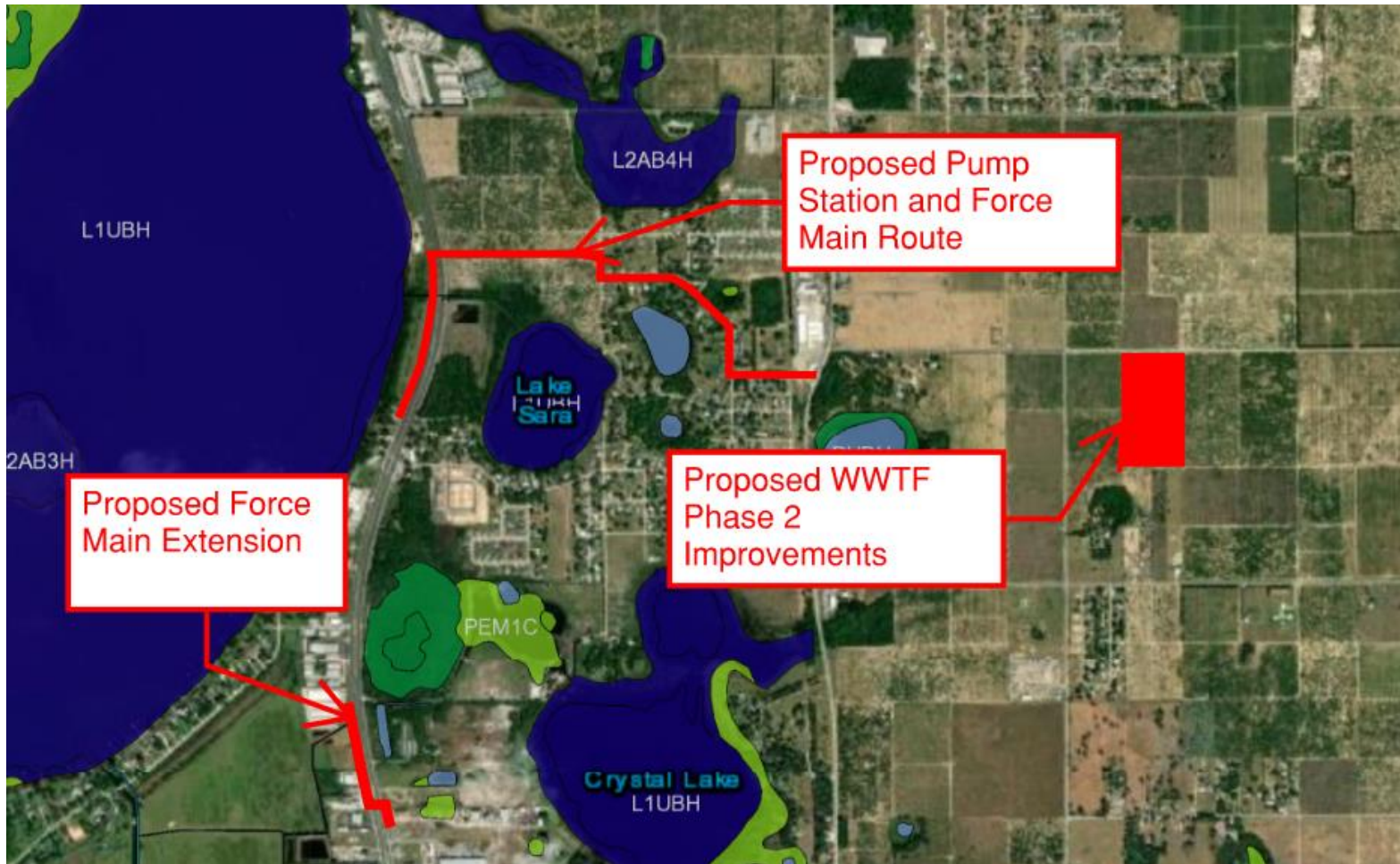
- ◆ Elevated Headworks (grit and mechanical screen;
- ◆ Surge tank;
- ◆ Additional treatment train; and
- ◆ Operations building.

Pump Station and Force Main:

- ◆ Master pumping station upgrade (15 Hp to 50 Hp);
- ◆ Redirect US 27 commercial customer flows;
- ◆ 5,700 ft. large force main (6" and 8"); and
- ◆ 1,717 ft. small force main (3").



SELECTED ALTERNATIVE



ENVIRONMENTAL REVIEW

- ◆ Performed per FDEP SRF requirements
- ◆ Pipelines to be constructed in previously disturbed public R/W and an open field
- ◆ WWTF improvements to be constructed on existing Town-owned WWTF site
- ◆ WWTF Environmental assessments previously performed (Town-owned 19.7 acre site):
 - ❖ State Clearinghouse review
 - ❖ Minimal potential impacts (sand skinks - outside project area)
- ◆ No environmental issues discovered that are anticipated to affect construction of Project



CAPITAL FINANCING PLAN

- ◆ Required attachment to Facilities Plan
- ◆ Summarizes financial plan for Project
- ◆ Ability to pay loan analysis



FINANCIAL PLAN – PROJECT COSTS

- ◆ Total Estimated Capital Cost: **\$9,057,633**
- ◆ Funding (estimated):
 - 80% grant: **\$7,246,106***
 - 20% loan: **\$1,811,527**
- ◆ Loan Terms:
 - 20 year loan**
 - 0.6% interest (est)**
- ◆ Payment Schedule (base): **\$96,355/year***
- ◆ Designated funding sources:
 - Biannual payments**
 - Utility Enterprise funds**
 - Utility Impact fees**
- ❖ NOTE: * A portion of total capital cost could be determined to not be grant eligible (growth infrastructure %, segment cap limitations, etc.)



NEXT STEPS

- ◆ Dec. 2023 – Facilities Plan, Plans, Specifications and RFI Submitted ✓
- ◆ 1/9/24 - Town Council Adopt Facilities Plan (via Resolution)
- ◆ 2/14/24 – SRF Hearing – Funding Approval
- ◆ 6/1/24 - SRF Funding Agreement Executed
- ◆ 8/15/24 – Bid/Construct Project (~16 month construction)



QUESTIONS?

